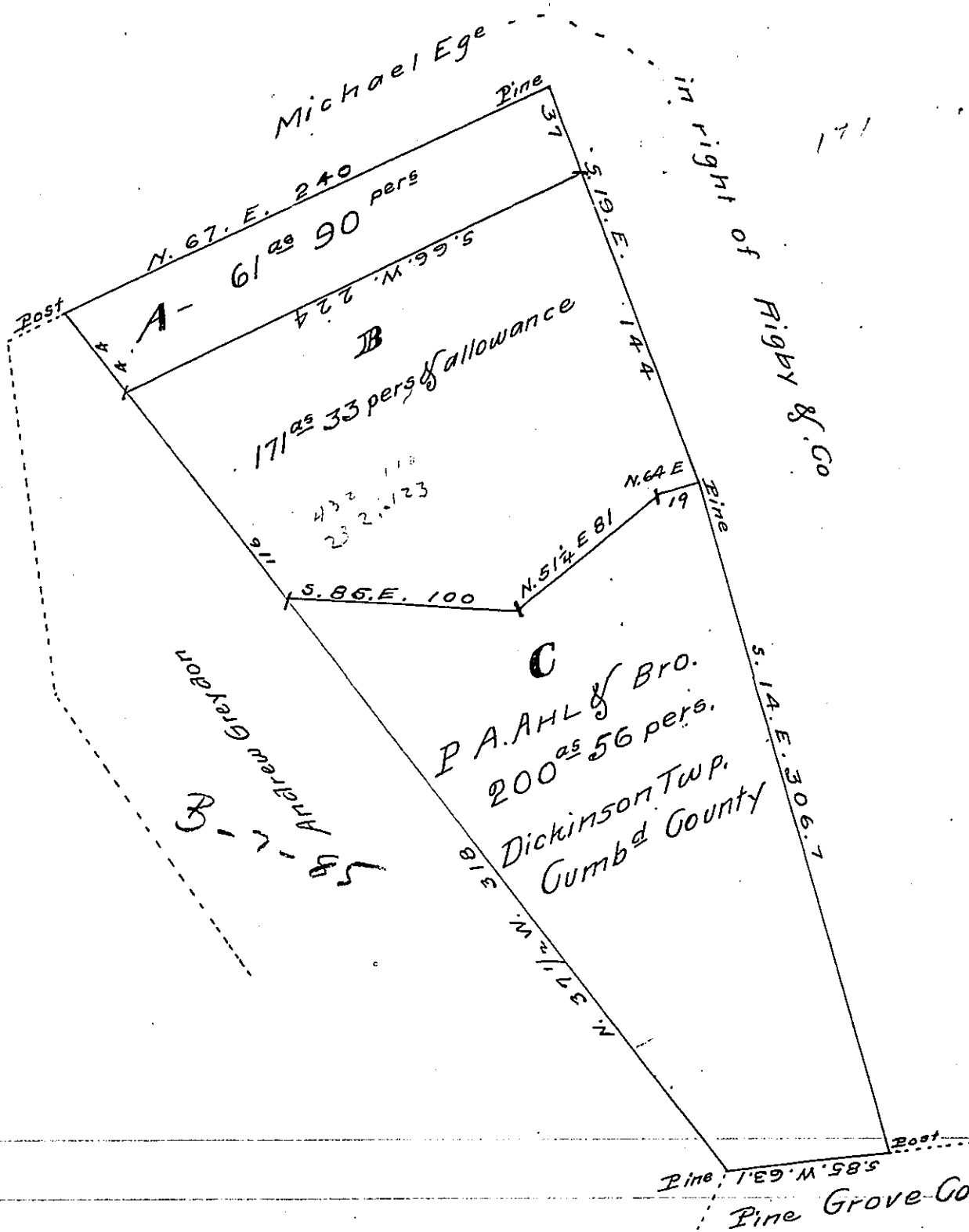


FORM NO. 1.



Draft representing in three parts a survey made under War¹ to W^m M. Biadle of 432^{as} 110 pers and allowance.

Part B was patented to Dan^l Keller June 14th 1870

" C contains 200^{as} 56 pers and allowance

" A balance of surpl. 21 " " "

261.77 " " "

J. C. Eckels, County Sur.

Nov. 8th 1873

IN TESTIMONY that the above is a copy of the original remaining on file in the Department of Internal Affairs of Pennsylvania, made conformably to an Act of Assembly approved the 16th day of February 1833, I have hereunto set my hand and caused the Seal of said Department to be affixed at Harrisburg, this eleventh day of September 1907

Henry Houch
Secretary of Internal Affairs.